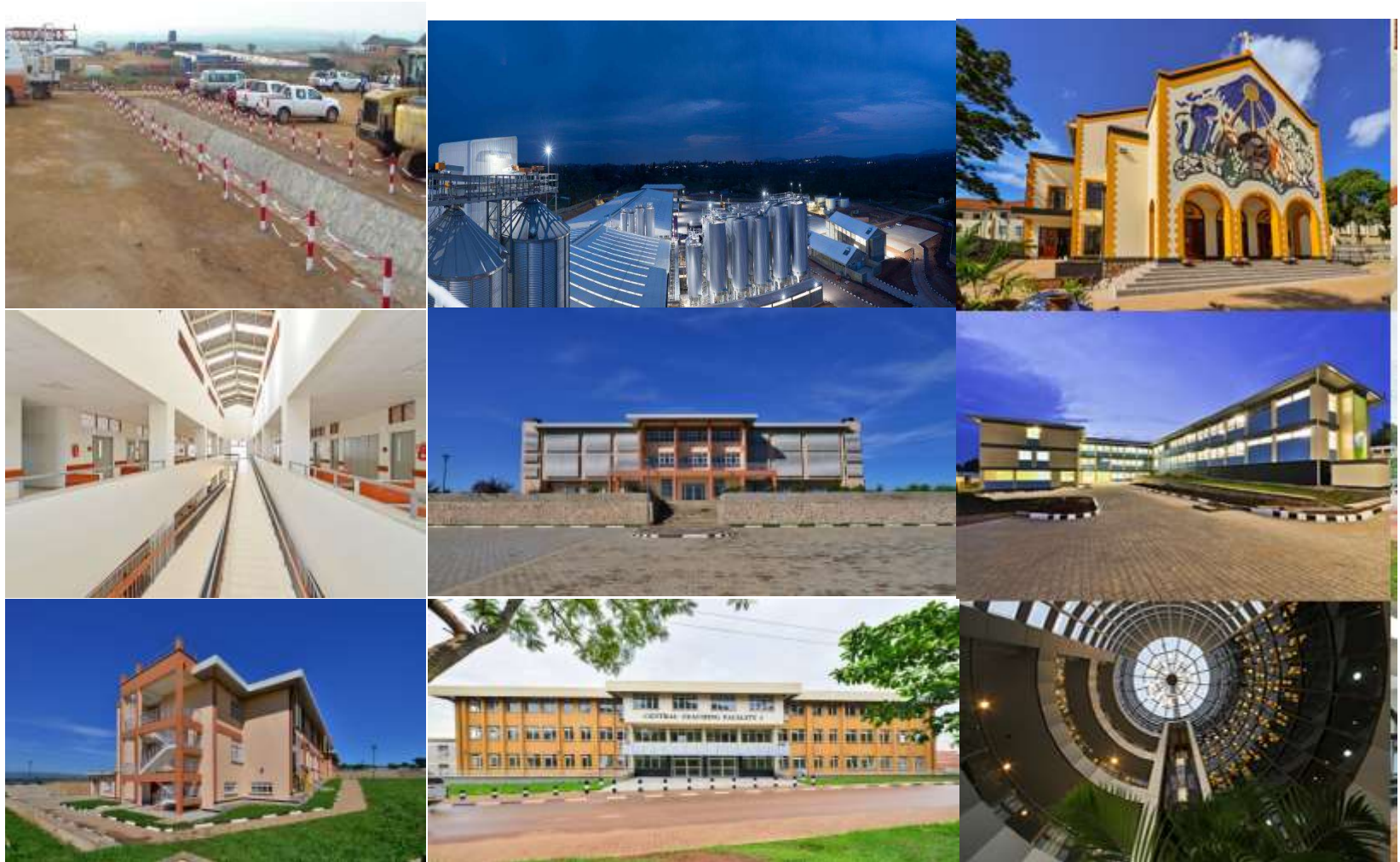




EXCEL CONSTRUCTION LTD.

“ACHIEVING QUALITY AND VALUE ON TIME”





Introduction

Excel Construction Ltd. was incorporated in 1992 as a Joint Venture between the Madhvani Group Ltd. and Gomba Construction Company Ltd and by virtue of majority shareholding is a local Ugandan Construction Firm.

The company operates nationally and regionally from its Head Office in Jinja and liaison Office in Kampala and is one of the leading players in the Ugandan Construction Industry.

As a Venture partner with Madhvani Group Ltd. that is at the forefront of industrial development in Uganda and the region, Excel has access and support to :

- A world-wide network of offices for procurement.
- Project finance & management expertise.



Introduction to the Madhvani Group Ltd



Madhvani Group Ltd. is one of the largest diversified private-sector Groups in East Africa, providing employment to over 20,000 people.

The group started its operations in Uganda in the early 1900's and has since steadily grown into a widely-diversified conglomerate in:

- Construction
- Manufacturing (Sugar, Steel, Packaging, Sweets etc.)
- Real estate
- Trading - Authorized distributors of several world renowned construction related products e.g. Kohler, Assa Abloy, Trane AC's Omega lifts, Tac tile roofing solution, Gerflor flooring solutions, etc.
- Insurance Service Provider for both life and general
- Tourism and Hospitality Industry

The current turnover of the Group in Uganda exceeds US\$500 million with total assets in excess of US\$1Billion.



Certifications

Excel Construction Ltd. is:

- ISO 9001:2015 certified.
- Health and Safety compliant with Internationally set industry standards towards HSE policies and guidelines. (**IOSH**)
- Registered with Petroleum Association of Uganda (**PAU**)
- Association of Uganda Oil and Gas Suppliers (**AUGOS**)
- Uganda National Association of Building and Civil Engineering Contractors (**UNABCEC**)
- Uganda Chamber of Mines & Petroleum
- Uganda Manufacturer's Association
- Public Procurement and Disposal of Public Assets Authority (PPDA)

Awards / Appreciation certificates

- ❖ National Water and Sewerage Corporation (**NWSC**)
- ❖ National Social Security Fund (**NSSF**)
- ❖ Nile Breweries Ltd. (**NBL**)

CERTIFICATE

Excel Construction Ltd.

P.O. Box 1202, Jinja, Uganda

has implemented and maintains a Quality Management System which fulfills Nemko's provisions for Management System Certification and the requirements of the following standard

ISO 9001:2015

with the scope described by the organization, 2020-06-30

The certificate covers the following activities:

Construction Company Specializing in Civil Works Including, Construction and Rehabilitation of Commercial, Residential & Multistoried Buildings, Roads, Water Supply and Supply of Furniture

Oslo, 2020-07-17



Kristin Hoff Hadland
Nemko AS, Certification Department

First time issued **2014-04-23**
Expires **2023-04-23**





CERTIFICATE

Nemko AS has issued an IQNet recognized certificate that the organization:

Excel Construction Ltd.
P.O. Box 1202, Jinja, Uganda

has implemented and maintains a
Quality Management System

for the following scope:

**Construction Company Specializing in Civil Works Including,
Construction and Rehabilitation of Commercial, Residential &
Multistoried Buildings, Roads, Water Supply
and Supply of Furniture**

which fulfils the requirements of the following standard

ISO 9001:2015

Issued on: 2020-07-17

Validity date: 2023-04-23

This attestation is directly linked to the IQNet Partner's original certificate and shall not be used as a stand-alone document

Registration Number: NO-800770




Alex Stoichitoiu
President of IQNet


Kristin Hoff Hadland
Nemko AS



IQNet Partners*

AENOR Spain APNOR Certification France APCER Portugal CCC Cyprus CISO Italy
CQC China CQM China CQS Czech Republic Cro Cert Croatia DQS Holding GmbH Germany EAGLE Certification Group USA
PCAV Brazil PONDONORMA Venezuela ICONTIC Colombia Inspecta Sertifimint Oy Finland INTECO Costa Rica
IRAM Argentina JQA Japan KPC Korea MIRTEC Greece MSZT Hungary Nemko AS Norway NSAI Ireland
NYCE-SIGE Mexico PCBC Poland Quality Austria Austria RR Russia SII Israel SIQ Slovenia
SIRIM QAS International Malaysia SQS Switzerland SRAC Romania TEST St Petersburg Russia TSE Turkey YUQS Serbia

* The list of IQNet partners is valid at the time of issue of this certificate. Updated information is available under www.iqnet-certification.com



This is a certificate awarded to

Excel Construction Ltd.

on successfully completing

Managing Safely In Construction

a course approved and validated by the

Institution of Occupational Safety and Health

in association with

RISK & SAFETY MANAGEMENT SERVICES LTD

Signed on behalf of the Council

Chief Executive

Course Organizer



Date: 31 May 2010

Cert No: 5909

Possession of this certificate does not confer exemption from accredited qualifications which lead to membership of IOSH.



PETROLEUM AUTHORITY OF UGANDA

Date: 19-DEC-2018

QUALIFICATION ON THE 2019 National Supplier Database(NSD)

Dear: EXCEL CONSTRUCTION LIMITED

The Petroleum Authority of Uganda is pleased to inform you that you have been qualified on the 2019 National Supplier Database(NSD) for supply of goods, works and services in the oil and gas sector in Uganda.

Your NSD Number is: **NS-10092/17/39**

A list of all qualified companies, entities and individuals will be available on our website www.pau.go.ug under the National Supplier Data Base for your possible use in establishing business collaborations.

EXECUTIVE DIRECTOR

PETROLEUM AUTHORITY OF UGANDA

Tel +256 414 320 780, +256 414 320 423/4

Email: nsd@pau.go.ug

Certificate Of Membership



This certificate is awarded to:

EXCEL CONSTRUCTION LTD



CHAIRMAN



CEO



UNABCEC



**UGANDA NATIONAL ASSOCIATION OF BUILDING
& CIVIL ENGINEERING CONTRACTORS**

INCORPORATED IN 1993 (UNDER THE COMPANIES ACT.CAP85)

CERTIFICATE OF MEMBERSHIP

This is to certify that

EXCEL CONSTRUCTION LIMITED

is a fully paid up member of good repute since 2010

Membership is valid until 31.12.2021


Class  **Annual contracts above UGX 10 billion** Membership No. UNAB/10/02/BC/033



President



Executive Director



Chairman-PMC

54-01



Uganda Chamber of Mines & Petroleum

Certificate of Membership

This certificate is awarded to

Mr. Malkit Singh Saini

in appreciation for being a Member of

Uganda Chamber of Mines & Petroleum

Chairman



Vice-Chairman



**UGANDA MANUFACTURERS
ASSOCIATION (UMA)**

CERTIFICATE
OF MEMBERSHIP 2021

This is to certify that

EXCEL CONSTRUCTION LIMITED

Large Scale Category

is a member of the association

Chairman

Executive Director



PPDA REGISTER OF PROVIDERS

CERTIFICATE OF REGISTRATION

This is to confirm that:

EXCEL CONSTRUCTION LIMITED,
P.O. BOX 1202, JINJA-UGANDA
Tel: +256 434 122068
Email: excel@excelconstruction.org

Registration Number: PRV/WRKS/256/DEC/09.

Has been duly registered on the PPDA Register of Providers for the period **January 2021** to **December 2021** under the following categories:

Category	Sub categories
Works:	<ul style="list-style-type: none">• Civil engineering, Construction of buildings & carpentry• Construction of roads, bridges and water projects• Mechanical works• Electrical, plumbing and other construction installation activities

Signed on behalf of the PPDA Register of Providers:

Name: **Anna M Senyonjo**

Signature: 


REGISTER OF PROVIDERS SECRETARIAT


Date Issued: 30 January 2021
PPDA REGISTER OF PROVIDERS SECRETARIAT
Plot 28 Nakasero Road
P.O. Box 3925, Kampala-Uganda
Tel: +256 434 234 522

**NATIONAL WATER AND SEWERAGE CORPORATION
JINJA AREA**



Presents to

.....
EXCEL CONSTRUCTION LTD
.....

a

Certificate of Appreciation

for your loyalty, outstanding commitment and
continous support for the year 2018

Principal Commercial Officer

General Manager

The customer is the reason we exist



Certificate of Appreciation

This certificate is awarded
to

Excel Construction

For being up to date on your members' NSSF contributions

May 2015

A handwritten signature in blue ink, appearing to read 'R. Mugerwa', is written over a horizontal dotted line.

SALES MANAGER
NSSF

A handwritten signature in blue ink, appearing to read 'J. Mugerwa', is written over a horizontal dotted line.

BRANCH MANAGER
JINJA

NILE BREWERIES LIMITED
SUPPLIER OF THE YEAR AWARDS 2011

THIS CERTIFICATE IS PROUDLY PRESENTED TO

EXCEL CONSTRUCTION

AS THE RUNNER UP SUPPLIER OF THE YEAR 2011

AWARDED THIS DAY OF NOVEMBER 3rd, 2011



NICK JENKINSON, Managing Director



NILE
Breweries Ltd.





Excel Construction Limited

Projects undertaken by Excel include:

- Hospitals
- Schools and Universities
- Oil and Gas sector
- Office Buildings.
- Water works
- Road works
- Industries and Industrial parks



Rehabilitation of hospitals and supply of medical equipment in the Central Region in Uganda (Mubende District)



Rehabilitation of hospitals and supply of medical equipment in the Central Region in Uganda (Masaka District)





Rehabilitation of hospitals and supply of medical equipment in the Northern region in Uganda (Anaka District)





Construction and equipping of Moroto hospital



Construction and equipping of Moroto hospital (Staff houses)





Construction and equipping of Hoima Hospital



Construction and equipping of Kabale Hospital





Construction of 24 schools and additional facilities in the Karamoja Region of Uganda



Construction of Office Building for Madhvani Group Ltd. on Buganda road in Kampala





Construction of Regional Head quarters of Lake Victoria Fisheries Organization (LVFO) in Jinja





Construction and Periodic maintenance of Gravel Roads.



Construction of RCC Box culvert at the new Jinja Nile Bridge





Extension of Brew house and Construction of New Packaging Hall for Nile Breweries Ltd.





Preparatory works being done for construction of Silos – Uganda Malting plant at NBL Jinja.





Construction of Uganda Malting Plant at Nile Breweries Ltd. Jinja



Construction of Water Supply Systems Effluent Treatment Plant built at Nile Breweries in Jinja



Construction of Greenfield Breweries in Mbarara.





Construction of Greenfield Breweries in Mbarara.





Construction of Mpanga Market in Fort Portal District





Construction of Mpanga Market in Fort Portal District





Construction of Madhvani Group Ltd.'s office in Kampala





Construction of Madhvani Group Ltd.'s office in Kampala



Construction of Madhvani Group Ltd.'s office in Kampala



Upgrading and construction of storm water drainage in the area for MGL's warehousing facilities



Construction of Pavilion building in UMA showground used for displaying MGL products during trade shows



Extension, rehabilitation and renovation works at St Francis' Chapel, Makerere University





Extension, rehabilitation and renovation works at St Francis' Chapel, Makerere University



Construction of 2 central teaching facilities in Makerere University, Kampala

Teaching Facility No. 1





Construction of 2 central teaching facilities in Makerere University, Kampala

Teaching Facility No. 1 (internal views)



Construction of multipurpose laboratory block and library in Mbarara university of Science and Technology (Library Block)



Main building front view



Main building isometric view



Supply, delivery and installation of Transformer



Main building Side view

Construction of multipurpose laboratory block and library in Mbarara university of Science and Technology (Library Block)



Reception



Reception



Reading Area



E-learning room

Construction of multipurpose laboratory block and library in Mbarara university of Science and Technology (Laboratory Block)



Pictures of Laboratory block taken from various angles showing green areas and parking space

Construction of multipurpose laboratory block and library in Mbarara university of Science and Technology (Laboratory Block)



Study carrels



Typical laboratory room



Parking area seen from above



Basement of the Laboratory block



Construction of 2 Central teaching facilities in Makerere University, Kampala

Teaching Facility No. 2





Construction of 2 Central teaching facilities in Makerere University, Kampala

Teaching Facility No. 2



Ladies wash room



Gents wash room



Ladies wash room



Toilet for people with disabilities

Construction of 2 Central teaching facilities in Makerere University, Kampala

Teaching Facility No. 2



Central Atrium



Atrium showing artistic features developed and installed by Makerere School of Art



Typical teaching facility



E-learning room

Construction of 2 Central teaching facilities in Makerere University, Kampala

Teaching Facility No. 2

Sound proof Auditorium designed for a capacity of 1000 students



View from the top



View from the right hand side



View from the left hand side



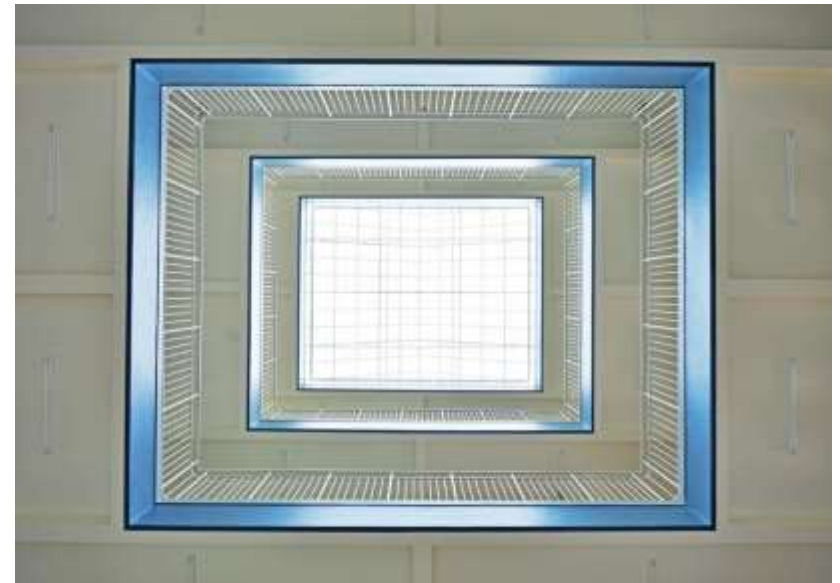
View from the speaker's stage

Construction of 2 Central teaching facilities in Makerere University, Kampala

Teaching Facility No. 2



Ramp for people with disabilities



View of sky light from bottom of the atrium



Main Reception



Corridor

Completion of UMI Teaching Institute on Jinja Road, Kampala



Front elevation of the building



Right side elevation of the building



Left side elevation of the building



Parking Area designed for 130 cars

D & B of Michinoeki, UNRA road side stations in Jinja and Njeru (Photos below of Jinja side)



Upgrade of roads, drainage ,Installation of weigh bridge and other ancillary works for “East African Packaging Solution Ltd” (Jinja)



Construction and renovation of facilities at Kawolo hospital



Aerial view of various buildings constructed



New maternity ward building



Staff houses



Interior of the new pediatric building



Construction of office blocks, conference facilities at Rwebitaba Zardi for National Agricultural Research Organization





Construction and Renovation of Educational facilities at National Teachers College in Kabale



Modification of Existing Warehouse into Offices along 3rd street industrial area, Kampala for Umeme Ltd.





Construction of the St. Francis Nsambya Hospital Training School's Administration and Classroom Block





Ongoing Projects as of March 2021

	PROJECT NAME	CONTRACT VALUE UGX/USD AS APPLICABLE	CLIENT
1	Proposed 70 Bed Mother Kevin Wing at St. Francis Nsambya Hospital, Kampala Uganda	USD 4,102,586.4	Nsambya Hospital
2	Construction of a Yoghurt & UHT Plant on Plot 210/212, Busunju for JESA FARM DAIRY LTD	UGX 13,910,240,979	Jesa Farm Dairy
3	Construction of New Mill at Kakira Sugar Ltd., Jinja	UGX 11,075,675,976	Kakira Sugar Ltd.
4	Construction of Office Block for Excel Insurance Company Ltd. on Plot 28 Hannington Avenue Kampala	UGX 9,005,003,268	Excel Insurance Company Ltd.
5	Access and drainage improvement for Kisiro – Bugangu Swamp Crossing along Bugodi-Kisiro-Bugangu road under Jinja Station	UGX 30,797,413,636	Uganda National Roads Authority (“UNRA”)
7.	Construction, Remediation and Commissioning of Uganda Wildlife authority Biosafety Level 2 laboratory at Queen Elizabeth National Park, Mweya Peninsula	USD 2,134388.32	CH2M HILL
8	Construction of Regional Referral Hospitals in Northern Uganda Districts of Gulu,Lira and Arua	USD 1,368,400	IWATA CHIZAKI Inc. Japan

Access and drainage improvement for Kisiro –Bugangu Swamp Crossing along Bugodi-Kisiro-Bugangu road under Jinja Station



Access and drainage improvement for Kisiro –Bugangu Swamp Crossing along Bugodi-Kisiro-Bugangu road under Jinja Station



Access and drainage improvement for Kisiro –Bugangu Swamp Crossing along Bugodi-Kisiro-Bugangu road under Jinja Station



Access and drainage improvement for Kisiro –Bugangu Swamp Crossing along Bugodi-Kisiro-Bugangu road under Jinja Station





Construction of a Yoghurt & UHT Plant on Plot 210/212, Busunju for Jesa Farm Dairy Ltd.





OIL AND GAS SECTOR

Excel Construction Ltd. has been actively involved in the development of the Oil and Gas Sector in Uganda since 2007 to date and carried out various civil enabling works for Tullow oil Plc, Heritage, Total E&P Uganda Ltd and CNOOC (U) Ltd.

Preparatory works for construction of Waste pits



Construction of Waste pits



Activities related to completion of a drill pad



Construction of Snake proof fence





Supply and assembly of temporary prefab units for accommodation, offices and ablution facilities.





Completed and handed over temporary Prefab units





Excel construction Ltd.'s Camp in Buliisa District designed and built on 7 acres of land to accommodate up to 90 – 100 workers



Access road created to the camp



Camp entrance gate manned by 24hour security service



Senior staff accommodation units



Dormitories for junior workers



Excel construction Ltd.'s Camp in Buliisa District designed and built on 7 acres of land to accommodate up to 90 – 100 workers



Camp Clinic operated by a registered nurse



Canteen



Workers' entertainment hall



Workers' entertainment hall (after working hours)

